

3000 BenchDot™ Dot Peen Range



Bench-Top Dot Peen Range

BenchDot 60-60E / BenchDot 100-100E / BenchDot 150-150E / BenchDot 300-150E
BenchDot 60-60EZA / BenchDot 100-100EZA / BenchDot 150-150EZA / BenchDot 300-150EZA
BenchDot 100-100EZAV / BenchDot 150-150EZAV / BenchDot 300-150EZAV
BenchDot 60-60DP / BenchDot 100-100DP / BenchDot 150-150DP / BenchDot 300-150DP

SPEC2000



DAPRA[®]

MARKING SYSTEMS

BenchDot™ Dot Peen Range

BenchDot™ series are robust dot peen machines designed for accuracy, speed, power and reliability. All models include a high quality ball screw mechanism with unique twin linear rails and twin linear bearings on each axis and a rigid cast column and base.

Wide range of marking windows

BenchDot™ series are available with standard marking windows of 60x60mm, 100x100mm, 150x150mm and 300x150mm.

Marking software features

- Multilingual user interface
- Straight, angled, arc & reverse marking
- Programmable character height and width: 0.15mm to 99.9mm in increments of 0.15mm
- Adjustable marking force (marking depth)
- Basic range of machine fonts (5x7, 7x9, Varidot + OCR versions) on embedded systems and full range of installed True Type fonts available in MarkMaster™ PC Systems)
- Time and Date marking in various formats
- Variable and serial number marking
- Data Matrix coding
- Vector graphics & logos (.plt file format on embedded systems and .plt & .dxf on MarkMaster™ PC Software)

Applications

- Permanently mark almost all engineering materials up to 62 HRc (cast iron, stainless steel, aluminium and titanium alloys, plastics...)
- Serial numbers, date codes, product reference, company logo, shift code, material batch...
- Identify small to large batches of components
- Marking on flat to uneven surfaces
- Circumferential marking device available (see options)

3000 Controller and interface

- No need for a PC
- Full Qwerty membrane keyboard (possibility of external keyboard)
- Very large and high contrast graphical screen allowing easy programming & previewing of marks
- Up to 1350 layouts (files)
- 2 x RS232 communication port
- Digital I/O (8 Input, 6 Output)
- Ethernet TCP/IP (optional)
- Vector graphics/logo import facility (.plt/.hpgl)

MarkMaster™ PC software (Optional)

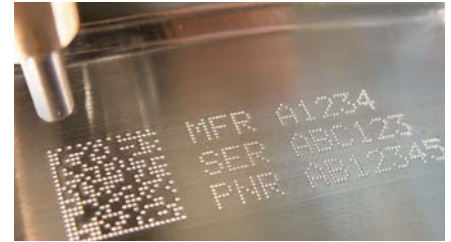
Optional Windows® based software. PC connected to 3000 controller

Among extensive features:

- Drag and drop graphical interface
- Advanced trial run
- Graphics tools
- Vector graphic/logo import facility (.hpgl/.plt & .dxf)

MarkMaster™ Advanced (Optional)

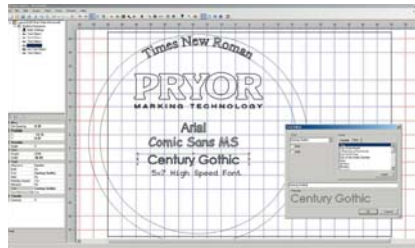
- Supports all Windows true type fonts
- Database connectivity for marking data queries
- Database connectivity for duplicate data checking
- Security Password features
- Data logging for marking report generation



Data matrix code using BenchDot™ series machine



3000 series controller



User interface in MarkMaster™ (Advanced) software

DAPRA[®]

MARKING SYSTEMS

www.dapramarking.com

Email: sales@dapramarking.com

66 Granby Street, Bloomfield, CT 06002

Tel: 800-442-6275

In CT: 860-286-8728

Fax: 860-726-9555