

This range of product has been especially developed to meet each requirement in terms of integration in production lines

## Technical specifications

### Capacity :

- Tungsten carbide stylus with 90° sharpening angle (available with 60° and 120° angle).
- Adjusted protection covers in series.
- Use of aluminium cast parts.
- Axis equipped with ball bearings and lead screw with anti back-lash.
- Two fixing areas available.

### Standard dimensions : (M4 inline 50)

- (L x W x H ) 148 x 160 x 242 mm
- Weight : 3.7 kg (weight given excluding the cable)

### Environment and power :

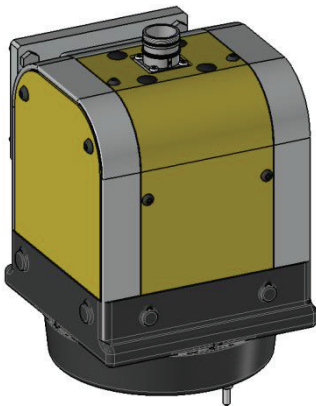
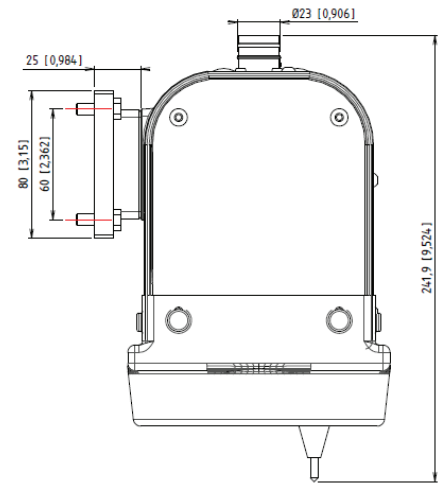
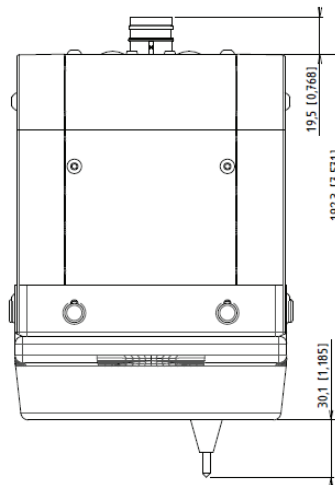
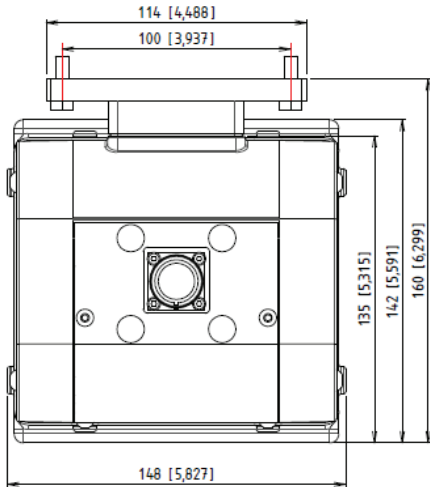
- Operating temperature : 0° to 45 ° (from 32°F to 115°F) °
- « Plug & Mark » function : No need for external supply, only one cable between the marking head and the control unit

### Standards :

- Machinery directive: 2006/42/CE
- "CEM" directive : 2004/108/CE (Industrial environment )
- Low power directive: 2006/95/CE
- FCC directive– chapter 15
- OC/CB Certification

### Options / accessories :

- 5 / 10 m cable
- Compatibility fixing kits
- Linear axis 100 % electric (200 mm stroke)
- Maintenance Kit
- Rear Connection
- Rigid protection cover for M4 inline 50 and 120
- Flexible protection cover for M4 inline 50



All dimensions are in mm [inch]  
 Dimensions for M4 Inline 50 (standard)  
 \* Dimensions can vary following configuration (See table here under)

### Delivered with:

- Cable
- Protection cover
- M4 inline fixing kit (screws included)

Configuration	Marking Area (mm)	Dimensions (mm)	Character Height (mm)	Weight (kg)	PART NUMBER
Standard	50 x 55	148 x 160 x 242	from 0.6 to 54.9	3,7	NAI0-9001
Medium	120 x 55	235 x 160 x 242	from 0.6 to 89.9	4,4	NAI0-9000

Version 1.0 - 09/06/2015 R : RLV V : SJ