

The CEG is the ultimate solution for integrating a compact marking unit into machine design-and-build applications, or for circumstances where the marking footprint is limited. The CEG can also be mounted on a column and base to function as a bench-top system.



Your compact, integrated solution for **direct part marking**.

STANDARD FEATURES:

- 2" (50mm) x 1" (25mm) marking window to allow multiple lines of data to be programmed and marked
- *Completely electric* in operation
- *Compact and lightweight* – easily mounted to a robotic manipulating arm
- Multiple head mounting surfaces for better flexibility
- Marking software – allows control over marking force (impact)
- Preview of marking data
- Protective boot to keep ambient debris out of the marking head
- Lead screw positioning for accuracy
- *Powerful, self-contained* controller running embedded marking software that does not require a dedicated PC to operate
- Linear, angular, and circular (arced) marking formats
- High-resolution LCD for a clear view of the user-friendly menu screen
- RS-232 interface for downloading marking data
- Digital I/O (8 OPTO-Isolated 24 VDC inputs and 6 solid state relay outputs) for external cycle start/stop applications or interfacing with other external equipment
- Automatic time, date, and shift coding
- Automatic counters
- Multiple password protection
- Serialization (automatically increments in alpha or numeric format)
- Data Matrix (2-D) compatible

OPTIONS: *(Available at additional cost)*

- Data Matrix encode software
- Win2068 NIMUE Windows™-based marking software
- Custom software
- Custom-engineered fixtures, hardware, and integration
- Ethernet (10/100 base-T) connection
- Extended marking head cable
- Column/base for bench-top use
- Extended nosepieces and styli for extended reach to marking location



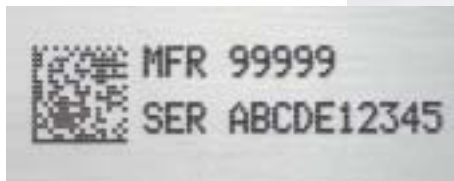
Adapter plate available for mounting CEG head in various positions using the top, bottom, back, and side faces.

SPECIFICATIONS

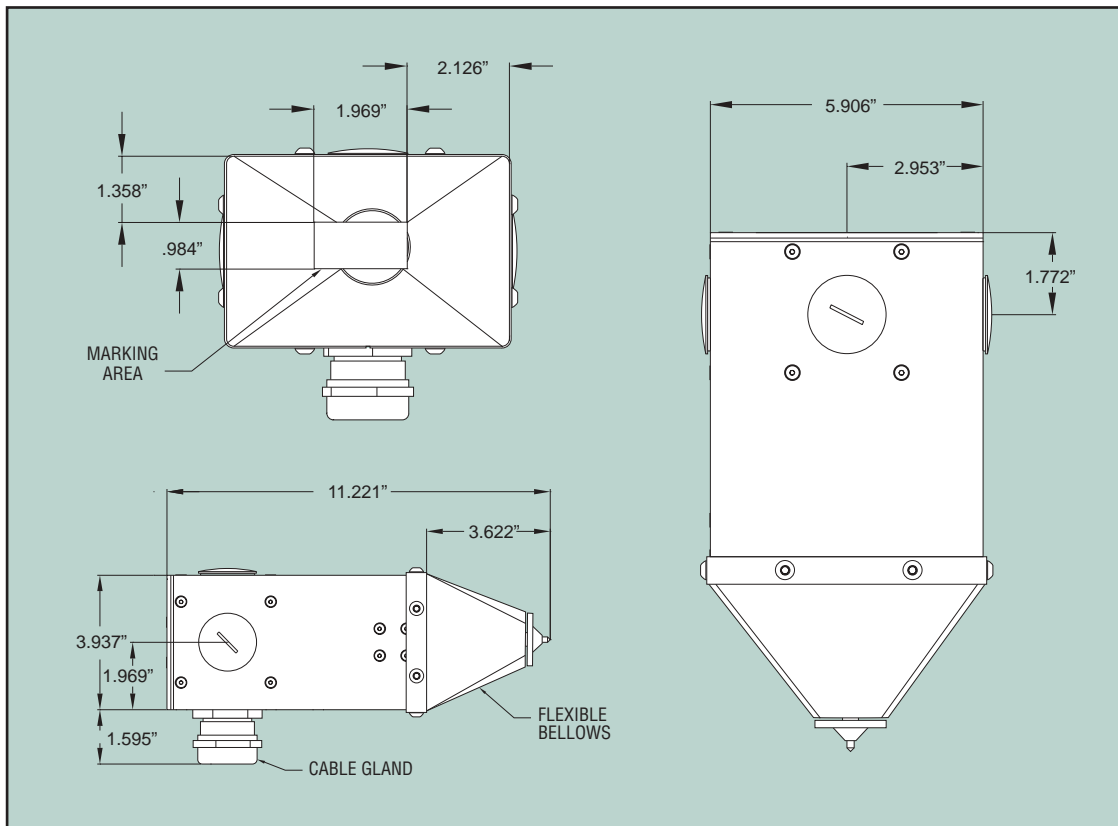
Complete system includes marking head with protective boot, marking head cable (9 ft.), controller with LCD screen, keyboard, and embedded marking software.

- Marking window: 1.969"W x .984"H
- Character size range: .040" to 1.00" (.008" increments)
- Fonts: 5x7, 7x9, and 5x9 SEMI OCR dot matrix; Varidot (variable dot spacing for marking continuous line characters)
- Memory: 1350 individual marking layouts, maximum
- Power input: 110 VAC, 60 Hz; 240 VAC, 50 Hz available on request. No air source is required.
- Stylus actuation: Electric solenoid
- Net Weight:

Marking head/cable	12.5 lbs.
Controller	22 lbs.



Standard and optional nosepieces (above) allow for marking in many locations.



DAPRA[®]
MARKING SYSTEMS

It is the better way to mark.

66 Granby Street, Bloomfield, CT 06002 Tel. 800-442-6275 Fax. 860-726-9555 www.dapramarking.com